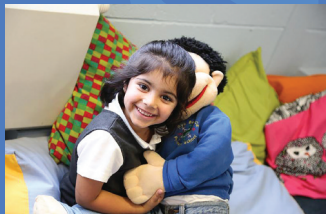




Pye Bank CE Primary School

Parent Information Book 2021-22



INSPIRE, ASPIRE, DREAM, NURTURE and ACHIEVE

The Pye Bank Pledge

1. To ensure that school is a happy and safe place for your children every day.
2. To aim for academic excellence for all children, ensuring that we have the highest expectation of what they can achieve: recognising the potential of every child in our care.
3. To strive at all times to meet the needs of every child of all abilities and backgrounds.
4. To nurture and value every member of the school community, as a unique individual.
5. To work in true partnership with all our parents, our children and our community.
6. To inspire and motivate our children, offering a challenging curriculum which is relevant, designed with memory in mind and reflects the values and the diversity of our amazing faith based community.
7. To provide opportunities which broaden experiences within and beyond the classroom, drawing on and extending existing talents and skills.

In order to fulfil our pledge to you, all school leaders will look after, develop, support and challenge all staff so they can be the best that they can be for your child.

School Leadership

The leadership team is here to help you:

- Maureen Andrews: Executive Headteacher
- Rhea Kurcewicz: Head of School
- Melissa Drake: Deputy Head of School
- Debbie Maskrey: Safeguarding and Pastoral Leader
- Zabeda Hussain: Pastoral Manager
- Karen Stanley: School Business Manager
- Stephanie Lee: Assistant Head/SENDCO
- Steve Chew: Chair of Governors

If you have a concern or query then please contact the office who will help decide who the best person to help you will be.

Pye Bank also offers opportunities for Family and Adult Learning:

If you are interested in finding out more, then please contact Zabeda Hussain, Pastoral Manager, via the school office.

Pye Bank CE Primary School



Pye Bank CE Primary School is a fantastic school, set in the heart of Pitsmoor. It is an Academy and works in partnership with the Diocese of Sheffield Academies Trust. The curriculum is designed to serve the very diverse community of which we are so proud. We are a school with the ambition to be outstanding and our aim is for every child to achieve at the highest level they can, but it is also very important to us that all children feel safe, secure and HAPPY.

As a Christian Foundation School serving its community our mission is;

“To inspire and challenge the bodies, minds and souls of all learners, within a secure community underpinned by Christian values where all find respect for themselves, their families and their traditions.”

We are on a journey towards outstanding within all areas of school life and want to ensure that our amazing children receive the best education possible so that they can go out into the world and achieve their dreams. We have wonderful staff who all love to be at Pye Bank and a strong legacy of good practice.

We have a wonderful learning environment and people who visit us always comment on it. We are particularly proud of our Lavender Field (School Hall) which forms the heart of our school.

We are absolutely committed to working in partnership with our parents and our community.

WE HOPE THAT ALL ARRANGEMENTS IN THE INFORMATION BOOKLET WILL QUICKLY BECOME ESTABLISHED BUT THINGS MAY BE A LITTLE DIFFERENT IN AUTUMN TERM IN LINE WITH GOVERNMENT GUIDANCE AND RISK ASSESSMENT.



GEMSTONE CAFÉ

Lunchtime is a very important part of the school day and we aim to make it as pleasurable as possible.

Our Gemstone Café is a lovely place to eat and we are proud to have our own catering team. Children get to choose from a menu of hot meals (*incl a vegan option*), jacket potatoes and sandwich options, along with an optional visit to the salad bar.

Menus are sent home at the beginning of each term and can also be accessed on our website.

Our Family Lunch approach involves four sittings for children. If you would like to be a lunchtime volunteer please contact Zabeda Hussain, Pastoral Manager.



Breakfast club

Breakfast club is open at 8.00am and closes at 8.45am (last breakfast is served at 8.35am). It is the perfect way to start the day, with free drink, toast, baked beans and cereal. The Breakfast club provides children with an opportunity to socialise before school. We work in partnership with Magic Breakfast who provide free cereal and also free bagels for EVERY child in the classroom.

Packed Lunches

We encourage families to send children with a healthy lunch but we do believe it is parental choice what that includes.

We just have two rules :

- 1. No fizzy or high energy drinks.**
- 2. No sweets or chocolate bars.**
Chocolate biscuits such as penguins or Kitkat biscuits are fine.

Why not chat to your child about what makes a healthy lunchbox? They often have ideas from their learning in school.

Please avoid overly fatty foods if possible. Aim for a good balance. We can advise you if you are unsure.

Working with parents

Here at Pye Bank CE Primary School we believe that parental partnership is key to our success. We therefore aim to provide as many opportunities for our parents to be involved in day to day activities in school. All events will be shared with parents as soon as possible.



Coffee mornings

Pye Bank parents are very active in the school. The coffee mornings will continue on Wednesday mornings each fortnight in the Gemstone café. Any parent of any pupil in school is welcome.

It is a good place to get information!

There are other ways to get involved, such as becoming a reading volunteer, lunchtime volunteer or taking part in one of our Adult /Family Learning courses.

We have a selection of courses on offer to suit all abilities. Some of our courses are delivered on site and others take place at Sorby house.

If you think you might like to get involved in one of our courses, please contact Zabeda Hussain, Pastoral Manager via the school office.

Community Hub



We are delighted to have our Pye Bank Community Hub to use for Community Learning/Activities.

our curriculum

Here at Pye Bank CE Primary School we provide a creative curriculum with English and Maths at its core. The wider curriculum is based around topics linked to History, Geography and Science.

We have provided a good wider curriculum for a number of years, as recognised by OFSTED 2017. However, we redesigned our curriculum at the beginning of 2019 in line with new curriculum guidance from OFSTED and new research.

Our new curriculum has been designed with memory in mind. At the heart of the curriculum are English and Maths. We then have a number of half termly topics each year, with History and Geography as key driver subjects. We make sure we revisit key concepts and skills to help children place learning into long term memory, and there is a strong focus on knowledge and vocabulary too.



Science is taught every week alongside the main topic. Real life experiences are central to our work and we invest in memorable experiences for your children within and outside of school. Our curriculum will provide lots of learning challenges throughout the academic year that will allow children to solve problems, apply themselves creatively and express their knowledge and understanding effectively across the curriculum.

Children will bring home a knowledge organiser for each topic. This is used to help them learn core knowledge.

Homework

What is homework?

At Pye Bank we view homework as being a supported or independent task which is undertaken outside of curriculum time and which reinforces, extends, or enriches current learning.

Why is it set?

The purpose of homework at Pye Bank is...

- To provide opportunities for parents to be involved in children's learning: Positive parent/child time
- To enable children to practise, rehearse and consolidate skills.
- To broaden the context of learning: enrich and extend
- To prepare for new learning
- To enable children to take responsibility for their own learning, become more independent and develop perseverance.
- To support children's Learning Behaviours.

What can you expect?

Homework will be given on Mondays and books must be returned each day in reading bags. It will consist of the following tasks:

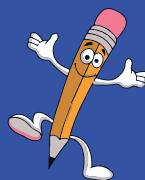
Daily reading



Weekly Spellings or Vocabulary



Times tables /
Maths Skills



Handwriting

AND REMEMBER BUG CLUB READING
AND TIMES TABLES ROCKSTARS.

Uniform

At Pye Bank we are proud of our school uniform, as are the children. Uniform is *a compulsory part of school life*, and helps children feel equal, a sense of belonging and supports them with concentrating on their learning. We keep it very low cost.

The uniform consists of:

1. A royal blue sweatshirt or cardigan with the school logo on (where possible).
2. A white polo shirt (long or short sleeved)
3. Dark grey or black school trousers or skirt, girls may choose to wear a pinafore dress and cardigan. All uniform should be of a practical style to allow a child to run around and engage in activity at break times. Leggings should only be worn under a skirt and not on their own.
4. *Black school style shoes or trainers* - no heels.
5. Blue and white gingham dresses can be worn in the summer.
6. Hijabs should be plain in design and should be white, black or blue where possible.

Uniform can be purchased from any supplier. We are happy to provide a copy of the logo if parents want to purchase their own jumpers and have the logo embroidered onto it.



PE Kit

All children need a simple PE kit. This needs to include pumps/trainers, a plain white T-Shirt /polo shirt and black shorts . Tracksuit bottoms and tops are useful for outdoor PE during the winter months. These should be plain and black or blue in colour. All children will have an outdoor PE session every week. Children need to wear a sports or tightly fitting Hijab for PE, unless they are happy to remove it for the lesson.



Jewellery

Children are able to wear a watch, a simple ring and stud earrings. They must not be worn on PE days.

Behaviour

Aims

- Everybody in our school feels valued and respected.
 - Everyone is treated fairly and treated well.
 - We trust and respect each other.
 - We have a school where everyone feels happy, safe and secure
 - We promote good relationships so we can work together
- As a result, children achieve at a good level and fulfil their potential.

Expectations

Our expectations are that all pupils aim to be the best they can be by showing great learning behaviours at all times and following the 5 Golden Rules:

1. Work hard and allow others to learn
2. Show respect and be honest
3. Be kind in words and actions
4. Take part
5. Keep yourself safe, others safe and look after our school



Promoting Positive Behaviour

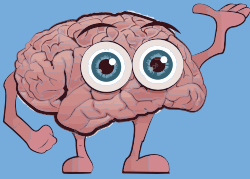
We aim to promote positive behaviour by creating a calm, welcoming environment and congratulating children and praising good behaviour as it occurs. All children are allocated to a House. The Houses are: McKee, Wilkinson, Scarborough & Hughes. The children are awarded House Points for great behaviour, achievement and engagement.

Good to be Gold!

House Points are totalled across each class each week and each half term there is a House reward. We have House competitions and an end of year House treat. We have a Gold Award assembly each Friday and two children in every class are recognised for great learning, effort and/or behaviour.

WE BELIEVE THAT IT IS EVERY CHILD'S RESPONSIBILITY TO BEHAVE WELL AND TO BE FOCUSED IN LESSONS. IF THERE ARE ANY PROBLEMS WITH THIS WE WILL TALK TO PARENTS.

You will receive a Behaviour and Effort report every half term. Please read our Behaviour Policy for more information.



Understanding how we learn

It is important to develop children's learning behaviours and their memory. Children will learn to understand how they learn best (Metacognition) and this will help them to achieve more.

At Pye Bank our school ethos is one of striving to be the best we can be, recognising that we all have different strengths and interests.

In class we talk about the 4 Rs. Resourcefulness, Reciprocity, Resilience and Reflectiveness.

The 4 Rs allow us to nurture an ethos where children focus on how they learn best and build the children's learning power through a variety of strategies and techniques.

If you would like more information on Building Learning Power and how you can help to support your child to become a better learner, then why not visit our school website or ask at the main reception for a leaflet . By school and home working together we can enable every child to become a better learner.

REFLECTIVENESS

Scientists need to be able to ask, observe and record how they reached a conclusion. In their work, they ask:

- What is the problem?
- What do I know?
- What do I need to find out?
- How can I find out?
- What have I found out?
- What do I think?
- How can I check my thinking?
- What have I learned?

DATA LEARNING

Scientists use data to help them understand the world around them.

NOTING

Scientists use their notes to record what they observe and what they think.

PLANNING

A scientist plans experiments using a testable and precise hypothesis.

REFLECTING

Scientists use their thoughts to plan, observe and test ideas.

Building Learning Power: The Pye Bank Way

RESILIENCE

MANAGING DISTRESS

A runner uses techniques to calm to avoid and keep their mind focused.

NOTICING

A runner uses their senses to notice their posture and notice their progress.

ADAPTATION

They have healthy bodies which help them concentrate and challenge themselves, allowing them to run for long times.

PERSISTENCE

They never give up, even when they have to keep them at the distance.

Building Learning Power: The Pye Bank Way

RECIPROCALITY

INTERDEPENDENCE

A guitar player works independently and with the group.

EMPOWERMENT

They listen to the other musicians to avoid overpowering together.

INITIATION

They take turns to play and other which have their play better.

COLLABORATION

They work with others to make music.

Building Learning Power: The Pye Bank Way

RESOURCEFULNESS

Questions are given to help you think and understand.

QUESTIONING

Questions are given to help you think and understand.

REASONING

What if? Why?

IMAGINATION

Questions are given to help you think and understand.

MAKING LINKS

A student uses their knowledge to solve a problem.

COMPARISON

They compare information to see if it is similar or different. They use a comparison to see a connection between two things.

Building Learning Power: The Pye Bank Way

Attendance

At Pye Bank we are committed to supporting the highest levels of attendance and punctuality, so we provide the best possible education for your child. Good attendance and punctuality has a positive effect on the self esteem, behaviour and achievement of all children, therefore it is vital that all children attend school on a regular basis. Parent/Carers have a legal duty to make sure their children attend school regularly. In Foundation stage 1 (Nursery) school begins at 8.30am.

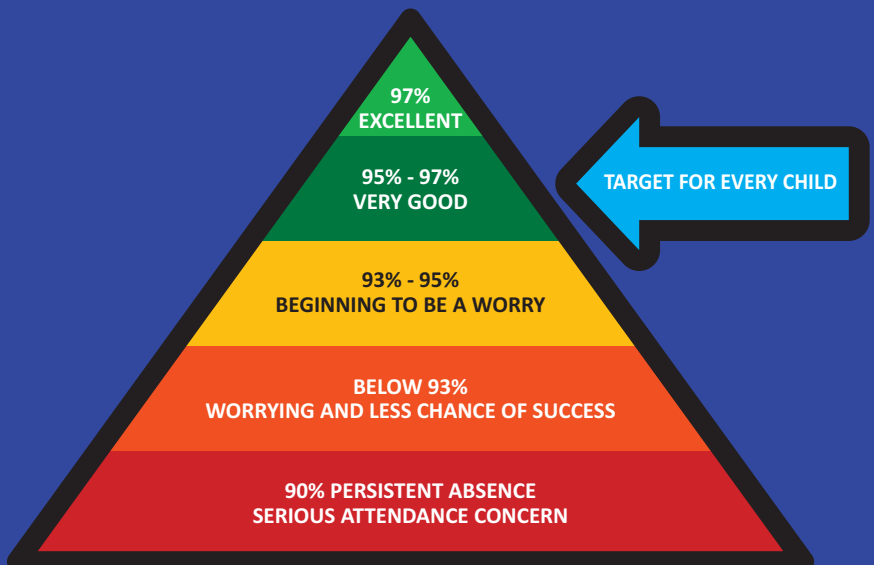
The rest of school opens at 8.45am each morning and children should be in class by 8.55am.

If children are late to school they often miss Phonics, Spelling or Vocabulary lessons. It is very hard to keep up if you miss these lessons.

School finishes at 3.10pm for children in years Reception, 1 & 2 and at 3.20pm for children in years 3 to 6.

IT IS VERY IMPORTANT TO PICK YOUR CHILD UP ON TIME.

WHAT GOOD ATTENDANCE LOOKS LIKE...



Going For Gold: Attend Today Achieve for the Future

We are committed to improving attendance; every child in school will take part in our Attend Today, Achieve for the Future scheme. Every day that your child attends they will colour in part of their attendance card. At the end of each half term, providing they have achieved 96% or above they will be awarded with a badge and certificate.



Each half term the awards are given out in a special assembly and parents are invited to attend. The class with the best overall attendance and all the children with 100% attendance at the end of the year will take part in a trip to the cinema. Dates for Attendance Assemblies will be arranged and sent as soon as it is safe to do so.

What happens when my child does not attend school ?

By law, schools must record absences and the reason given. You are therefore requested to contact the school on every day of your child's absence. Every child's attendance is monitored daily. If we have concerns we may call you back on the day. Sometimes we make home visits too.

If your child's attendance becomes a concern we will let you know by letter and arrange a time to discuss our concerns.



Term Time Leave

The law does not give any entitlement to parents to take their child out of school on term time leave. You have to request leave and the Headteacher makes a decision on whether to authorise a request for exceptional circumstances. If you choose to take your child from school during term time without authorisation, the Local Authority may take legal action and issue a fine.

Andover Street, Sheffield, S3 9EF
Telephone: 0114 2760472 Fax: 0114 2784730
E-mail: parents@pbp.dsat.education
Website: www.pyebank.sheffield.sch.uk
Twitter: @PyebankSchool
Facebook: Pye Bank CE Primary School



Pyebank CE Primary School is part of the
Diocese of Sheffield Academies Trust